



Taji-Kat's Peachie Cami

Materials Needed

Yarn: 5oz/140g Bernat Softee Baby; Soft Peach;
100% Acrylic
Hook Size: 3.75mm or (US F/5)
Stitch markers
Blunt-tip needle
3 peach colored decorative buttons

Gauge Data:

Dbl Crochet (4' X 4"): 20sts by 10rows

Instructions:

BACK:

Using a sc foundation chain; chain 72.

Row 1: Ch3 (counts as 1st dc), dc across using both loops, turn.

Row 2: Ch3, dc across using front loop only, turn.

Rows 3-12: Alternate rows 1 & 2; ending with row 2.

Fasten off and weave in ends.

On each side, count off 14sts, and then mark the 15th and 18thsts w/markers.

FRONT:

Follow instructions for Back thru Row 12. Do not cut yarn or fasten off.

Row 13: (Using both loops) Ch1, sc in next 2 sts; dc across to last 3sts, sc in each remaining 3sts. Turn.

Row 14: (Using front loops only) Repeat row 13.

Row 15: (Using both loops) Ch1, sc in next 5sts; dc across to last 6sts, sc in each remaining 6sts. Turn.

Row 16: (Using front loops only) Ch1, sc in next 9sts; dc in next 12sts. Sc in next 28sts; dc in next 12sts; sc in last 10sts. Turn.

Rows 17-18: Repeat row 16. Fasten off and weave in ends.

On each side, count off 14sts, and then mark the 15th and 18thsts w/stitch markers.

ATTACHING THE BODICE:

1. Using an invisible stitch, line up back and front of bodice and sew together. Weave in loose ends.

LACE BOTTOM:

With right side of bodice facing, attach yarn to corner of one side.

1st Row: *Ch5, skip 3sts, 1sc into next st; rep from * to end, slst to top of ch5.

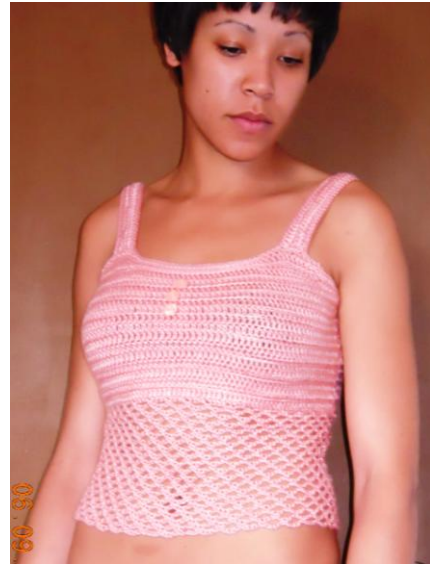
2nd Row: *Ch5, 1sc into next 5ch arch; rep from * to end, slst to top of ch5.

Rep 2nd row until lace bottom measures evenly 7.25" (19rows). Fasten off and weave in ends.

STRAPS (make 2):

1. Ch56, skip 1ch, sc in next and in each ch across. Turn.

2. Ch3; yo, insert hook in same st, yo and pull thru, yo, insert hook into next st, yo and pull thru (5 loops on hook), yo and pull thru 3 loops, yo and pull thru remaining 3 loops (1 cluster made). *Yo, insert hook into next st, yo and pull thru; yo, insert hook into same st,



yo and pull thru; yo and pull thru 3 loops, yo and pull thru remaining 3 loops*; repeat * * across to turning ch, dc in top of turning ch. Turn.

3. Repeat row 2. Do not turn, cut yarn leaving a long tail; pull tail thru last st top.
4. Attach strap to area of bodice front/back marked w/stitch markers. Weave in loose ends.

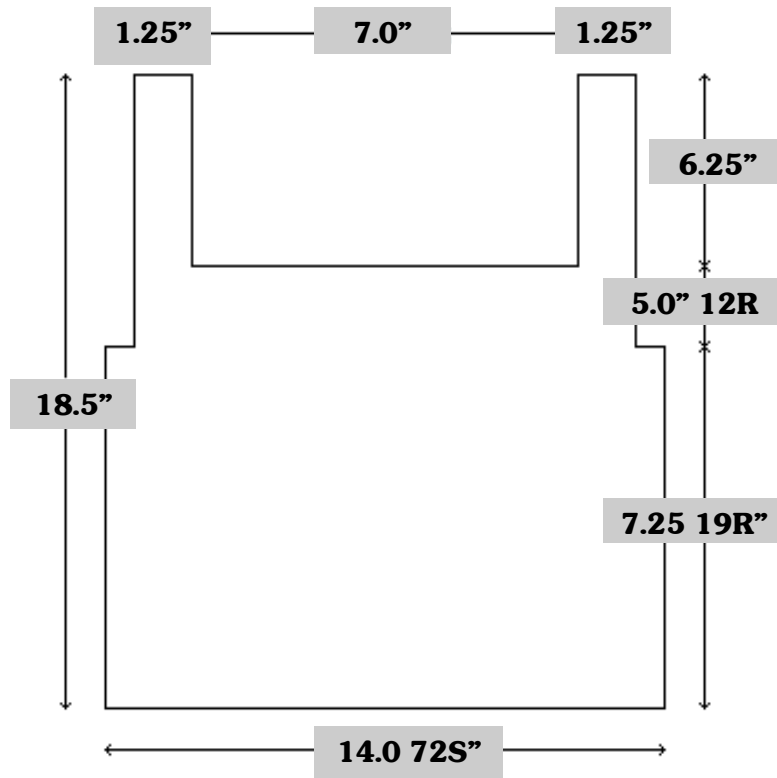
FINISHING:

1. Bodice Top Edging
 - a. With right side facing, attach yarn and sc 1 row around front/back of bodice and straps. Fasten off and weave in ends.
2. Sew on decorative buttons to front of bodice.



SHEMATICS:

Back:



Front:

